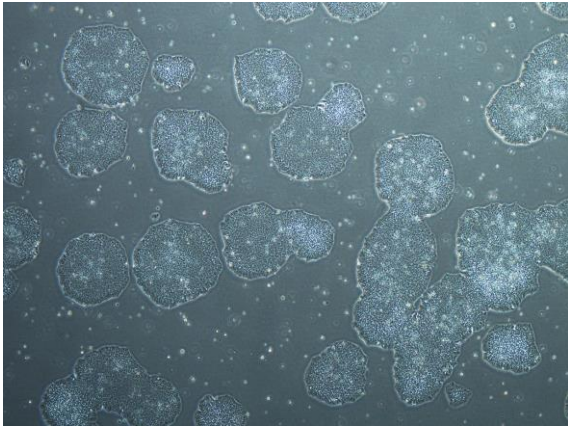
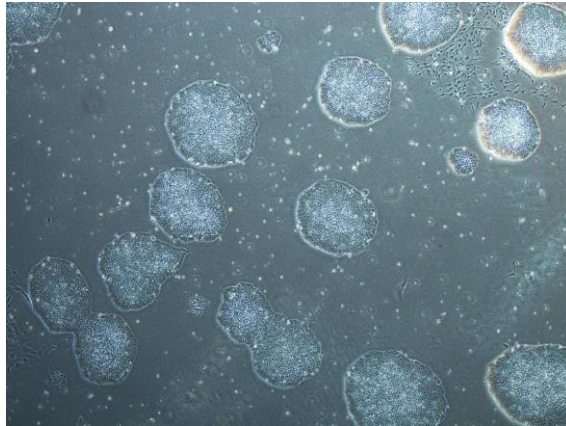


【 CiRA-j-1508 】 Morphology of iPSC colonies

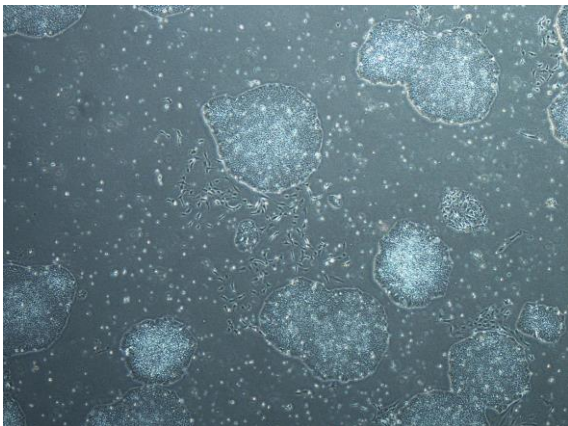
CiRA-j-1508-A: passage-3



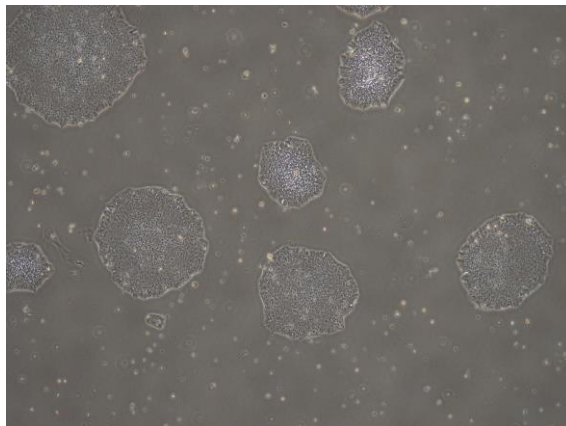
CiRA-j-1508-B: passage-3



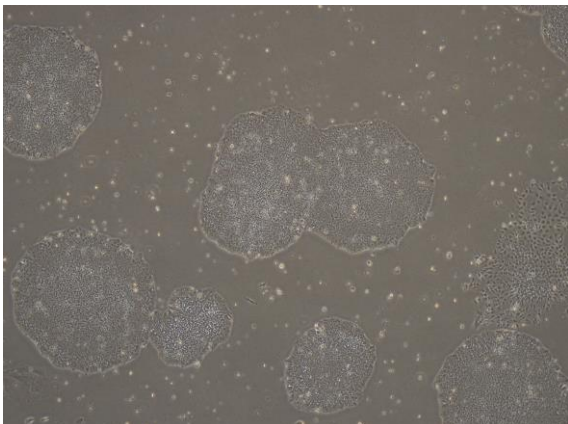
CiRA-j-1508-C: passage-3



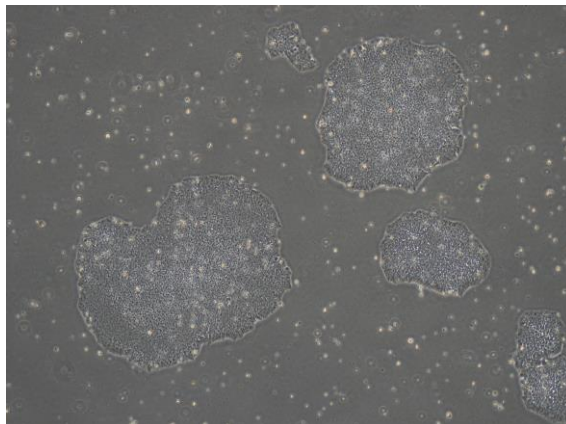
CiRA-j-1508-D: passage-3



CiRA-j-1508-E: passage-3



CiRA-j-1508-F: passage-3



(All images were captured at 4x magnification)